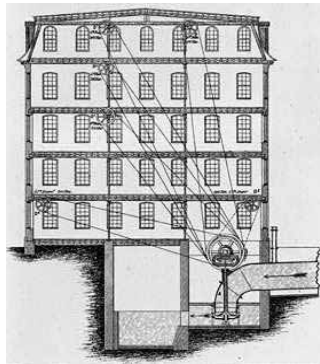


A GUIDE TO THE COHOES ERIE CANAL HERITAGE TRAIL



Spindle City
Historic Society

www.spindlecity.net
www.facebook.com/SCHS1

Interpretive Signage and Sights Along the Trail

**Clinton's Ditch Interpretive
Plaza**

**Periscope Viewers to see Locks
37 and 38 of the original Erie
Canal**

North Mohawk St.

**Clinton's Ditch - What can you
see?**

Clinton's Ditch Interpretive Plaza

**Canvass White – Canal
Innovator – Canvass White and
the Cohoes Company**

Clinton's Ditch Interpretive Plaza

**Capturing the Power of Water –
The Cohoes Company – The
Power Canal System**

Clinton's Ditch Interpretive Plaza

**The Rise of the Harmony
Company – A Canal Town
Transformed**

Devlin Street, near Lock 16

**The Growth and Success of the
Canal – Working on the Canal**
*Along the towpath between Lock
14 and 15 of the Enlarged Erie
Canal*

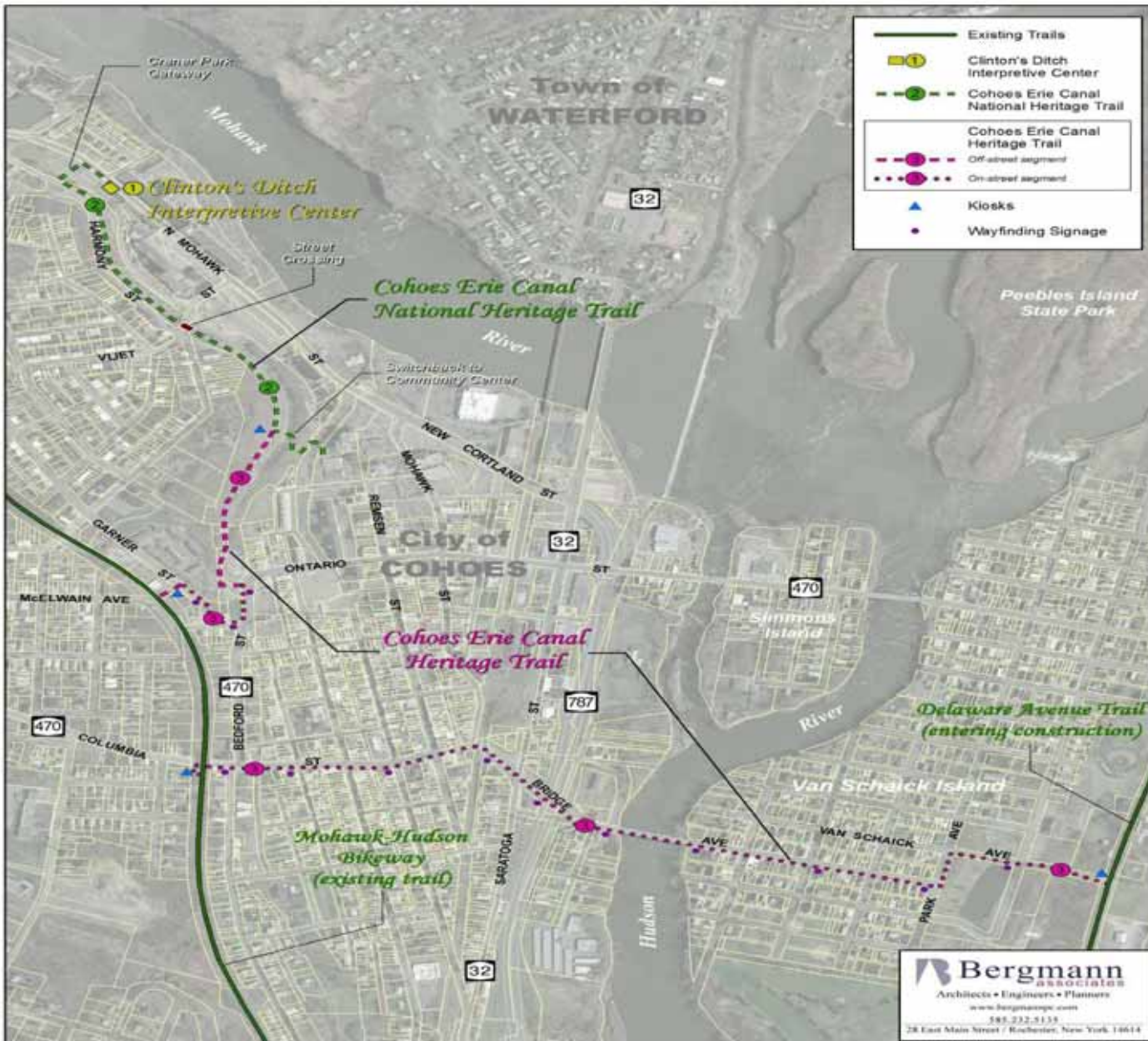
**Olmstead Street Historic District
– The Egberts and Bailey Mill**
Cayuga Street

**The Troy & Schenectady
Railroad – The Rise of Rail and
the Fate of the Canal**
*Mohawk-Hudson Bike Trail, near
the Trull Street entrance*

**Juncta – Cohoes as a Canal
Town – The Erie Canal and
Commerce**
*Corner of Columbia and Main
Streets*

**The Champlain Canal – Little
City of Bridges**
*Bridge Avenue between Route
787 and the Bridge Avenue
Bridge*

**Crossroads of History – An
Island of Many Names**
Van Schaick Park



Other Trails in Cohoes

Mohawk-Hudson Bike Trail

Access points in Cohoes:

- Manor Avenue
- Lansing Lane
- Vliet Street
- Johnston Avenue
- Garner Street
- Trull Street
- Alexander Street

Delaware Avenue Trail

Other Interpretive Signs

How a Lock Works
 Near Lock 18, North
 Mohawk Street

Robert Craner
 Craner Park, Devlin Street

Power Canal Park Signs
 Corner of North Mohawk
 and Vliet Streets

Horace B. Silliman
 George Stacey Davis
 Silliman Park, corner of
 Mohawk and Ontario
 Streets